

HIGH GAIN ANTENNA FOR 5G/LTE



GTEN® High Gain Antenna

High Gain Antenna by **GTEN®** offers a high-performance flat panel antenna engineered for superior performance within a low profile aesthetically pleasing form factor.

High Gain Antenna by **GTEN®** is ideal for 5G and LTE enhanced reception where form factor is a concern, **GTEN®** preassembled antenna features an easy to install mounting bracket to ensure “set and forget” installation with minimal post installation maintenance.

If it’s rugged, it must be GTEN®

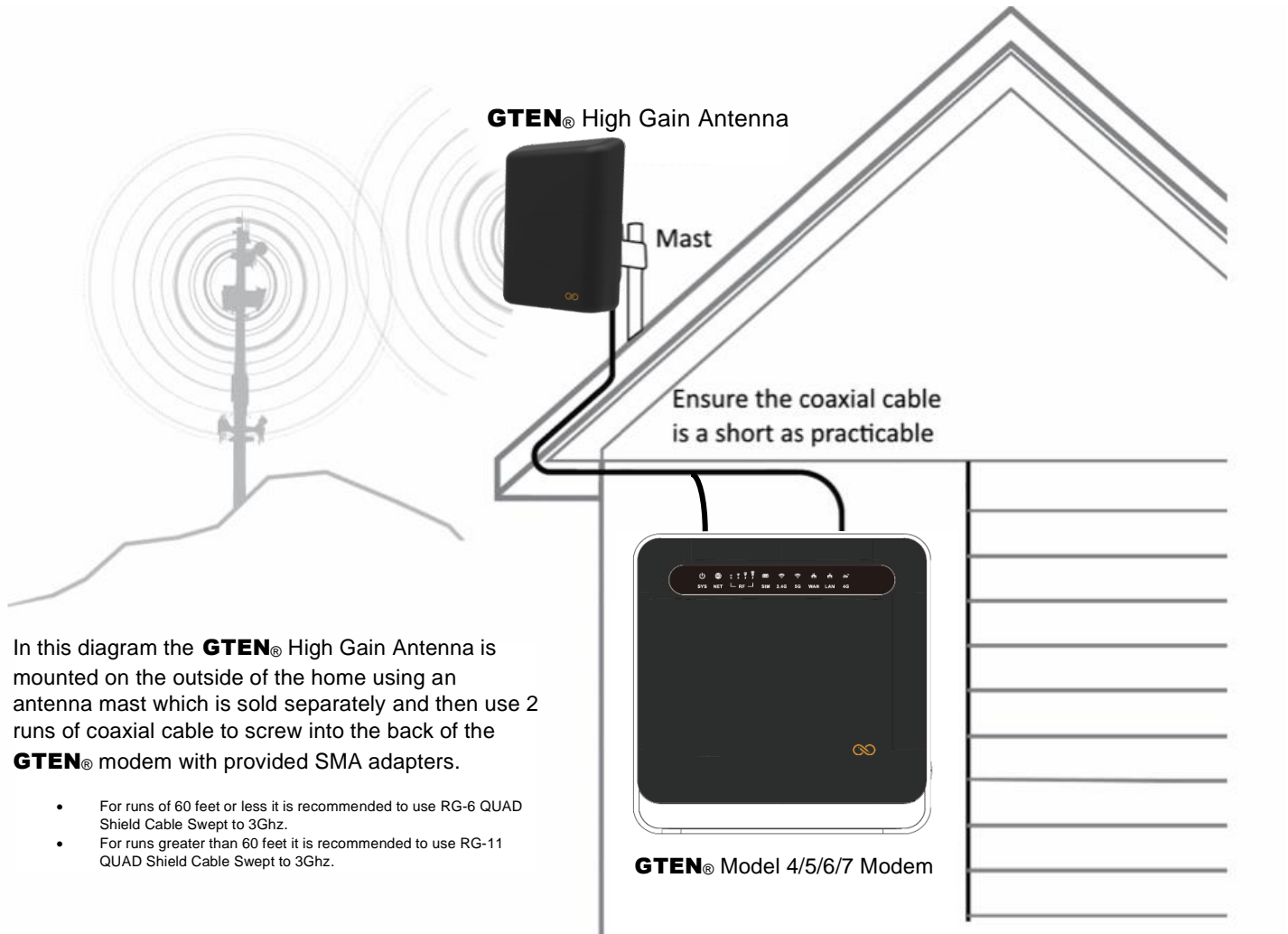
Key features:

- **Especially Designed for GTEN®** Modem products.
- **mmWave 5G** capable to improve **Ultra band connectivity**.
- **18 dbi High Gain Directional Flat Panel Antenna**
- Works with all carriers and is designed around the North American spectrum map.
- No need for two antennas to achieve MIMO standards, Antenna has MIMO standard.
- Standard F Type ports for easy hook up and cable acquisition.
- Able to be used with 75 Ohm Quad Shield coaxial cables with minimal loss.
- Rugged weatherized housing to improve life internal components.
- No power cord necessary.
- Comes with wide angle U-Bolts for easy mounting on almost any pole.
- Heavy duty Black PVC random to avoid discoloring.
- Works with all **5G** and LTE Band combinations and options.
- Configured to work indoors or outdoors.
- Discreet design and easy to blend in with environment.
- With **GTEN®** Model 6/7, Two antennas are recommended for best **5G** gains.
- Global carrier support.

HIGH GAIN ANTENNA FOR 5G/LTE

HOW DOES AN EXTERNAL ANTENNA WORK?

(Outdoor Mounted Example)



Alternate Use Cases

Great for:

- Remote business continuity
- Last-mile connection
- Vacation cabins / rural homes
- Interim solution to fixed line service
- Kiosk - wire-free connection
- Temporary offices such as construction sites Mobile stores such as food trucks

HIGH GAIN ANTENNA FOR 5G/LTE

GTEN® High Gain Antenna

Package Contents

- GTEN® High Gain Antenna
- Pole Mounting Bracket with U Clamp
- 2 x SMA RG-6 Coaxial Adapters

****Mounting pole not included.**

****Coaxial Cable not included.**

Specifications

- Dimensions: 8" (W) x 3" (D) x 9" (H)
- Weight: 2 Lbs. Shipped

Band Support

- Bands 2/4/5/12/13/14/17/25/26/30/41/66/71/85
- Carrier Aggregation Compatible
- mmWave 5G capable

Interface

- 2 F-Type Antenna Connectors (Back of unit)

Housing

- Weatherproof, Wind resistant, Stainless steel.
- Ground Strike, Waterproofed Antenna
- Black Random

Power Adapter

- Not Required

Key Features

- High Gain flat panel antenna with 18dbm reception possible.
- Easy to install, able to use with existing RG-6 Cable
- 4 Antennas in one to Enhance signal
- Two SMA connectors included to connect LTE modems for better signal reception
- Portable, light, and compact design for you to take anywhere.

System Requirements

- Compatible GTEN® Modem device.

** May work with other Modem types.

Support

- 90-day complimentary technical support*

Warranty

- 90 days from the purchase date.



This product comes with a limited warranty that is valid only if purchased from **GTEN®** America directly.

*90-day complimentary technical support following purchase if purchased from **GTEN®** America directly.

Valid for sale in all the United States, Mexico, and Canada.

HIGH GAIN ANTENNA FOR 5G/LTE

General Installation Instructions

Step 1.

- You will need to first attach the included L-Bracket to the outdoor antenna.
- The included L-Bracket will be mounted with the circular cutout placed against the back of the antenna.
- Align the 4 bolts with the holes in the L-Bracket. Fasten the L-Bracket with x4 washers, then x4 lock washers, then x4 5/16mm nuts.
- Use a 5/16mm socket wrench to tighten the nuts until they are snug.
- *Do not over tighten.**



Step 2.

- Use the U-bolt and the Lock plate to attach the L-Bracket to the mounting pole.
- Place the U-bolt over the pole and insert the ends of the U-bolt through the holes in the Lock plate. In addition, the Lock plate should have "Teeth" that grip the pole you are mounting to. The threaded ends of the U-bolt will first insert through the Lock plate and then through the L-Bracket.
- Fasten by using x2 washers, then x2 lock washers, then x2-10mm nuts. Using 10mm ratchet wrench, tighten the nuts to secure the mount to the pole.

*****Remember to remove the nylon covers from bolt.**

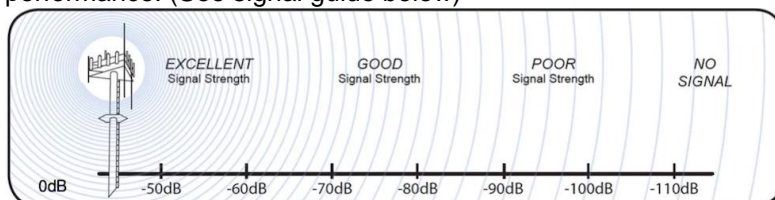


Step 3.

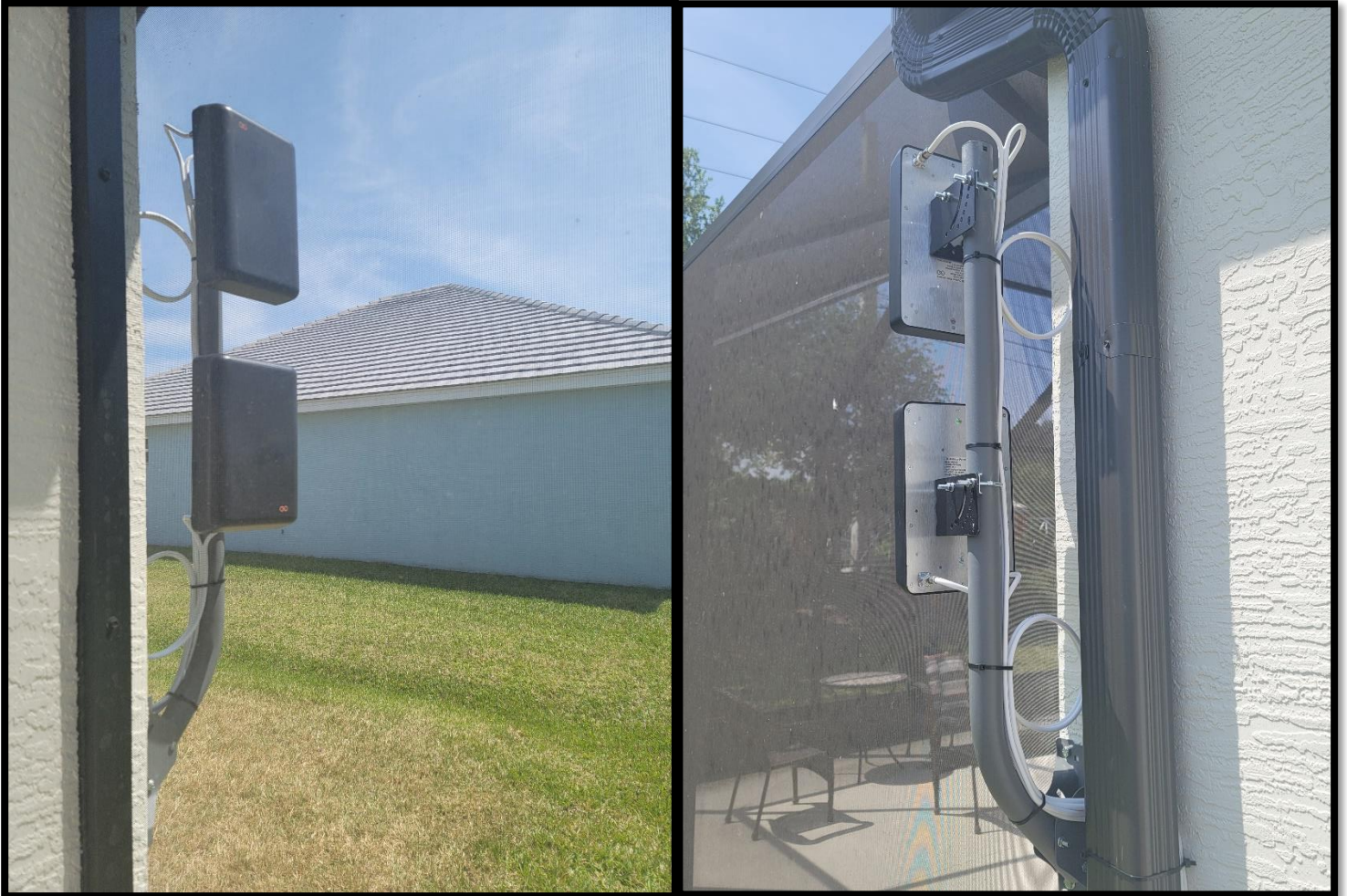
- Now attach your purchased coaxial cables to the two F type ports on the back **GTEN**® Outdoor Antenna.
- Now run your coaxial cables to your **GTEN**® modem and its desired location.
- Now attached the supplied SMA adapters to the ports on the back of the **GTEN**® modem.

IMPORTANT: Do not over tighten these adapters.

- Now, attach the other end of the Coaxial cables to the adapters on the **GTEN**® modem.
- If you are using a **GTEN**® Model 4 series device, you will need to log into the **GTEN**® modems web interface and set the antenna settings to External as the default option.
- Adjust your **GTEN**® Outdoor Antenna position to ensure maximum performance. (See signal guide below)



Example of an outdoor installation.



Visit [gtenamerica.com](https://www.gtenamerica.com) for more information about our products.